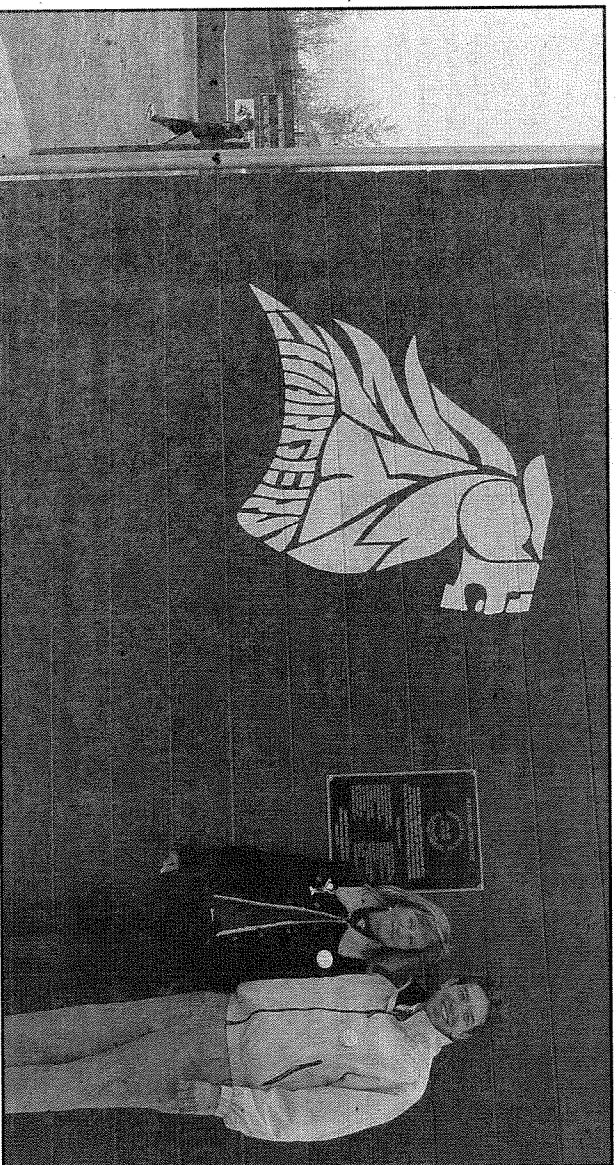


Community News

Community pitches in to build Brian Ellsworth baseball dugouts



Parents Rebecca and Joe Ellsworth stand in front of the Brian Ellsworth "On My Honor" memorial plaque at the new Chatfield High School dugouts.

Local contractors were among those pitching in to build new baseball dugouts at Chatfield High School, completing an Eagle Scout project on behalf of a Chatfield athlete killed in a car accident.

A ribbon-cutting and dedication ceremony for the Brian Ellsworth Memorial Eagle Scout project was held at the school in time for spring baseball season.

Ellsworth, a member of Boy Scout Troop 59, had completed all his merit badges and had only his Eagle service project remaining when he was killed in February. A leader of his church-sponsored troop contacted the Denver Region Boy Scout office, which agreed to provide the award posthumously. The Eagle Scout pin was attached to Ellsworth's tie at his funeral.

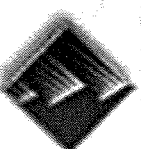
Learning that the baseball dugouts needed reconstruction, his fellow Scouts, family and friends selected the project as a way of both honoring Ellsworth and benefiting others.

Don Fitzmartin of The Staubach Co. served as project manager with Larry Broden of Skanska USA Building Inc. acting as general contractor. Providing labor, equipment, donations for a fund-raising auction and other assistance were:

Ellsworth's father, Joe Ellsworth; Milian Architects; television station KCNC; General Steel; Synergy Builders; Gear'n Up; Beck Masonry; Pioneer Group Inc.; CPC Painting Inc.; Lafarge West; Devinbrooke Homes; Robinson Brick Co.; Steelock; Clear Channel Radio; Chatfield High School; Jefferson County R-1 School District; H&B Foundations; D&L Electric Inc.; Kwal Paint; Hillen Corp.; Fastsigns of Arvada; St. Thomas Steel; R. Nichols Excavating; the Colorado Rockies; Roger Staubach; the Denver Nuggets; Denver Broncos; and Outback Steakhouse. ▲

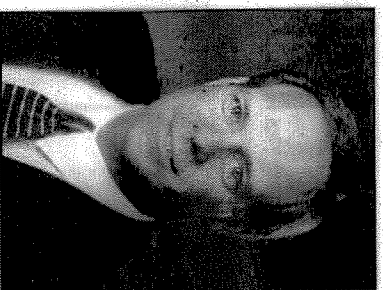
Commercial/Investor Real Estate Appraisers

Rocky Mountain Valuation Specialists is looking to hire two new commercial/investor real estate appraisers, who fit the following categories: hard worker, very quality conscious, self-motivated, well educated in finance, economics and real estate principles, and possessing excellent writing skills. The job entails analyzing and writing a valuation report of office, industrial, retail, apartment, hotel, land and special purpose properties. Must be familiar with MS Word and Excel. The position requires three years of strictly commercial appraisal experience with (or nearing) the Certified General license. We are located in Lakewood, Colorado. We produce appraisals for the entire state of Colorado. Please fax resume to Tim Lindsey or Larry Close at 303-914-9517.

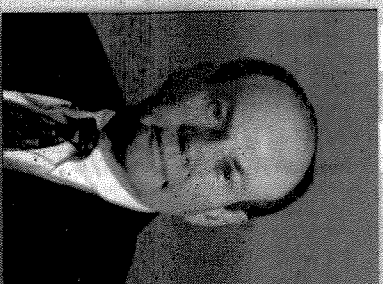


**ROCKY MOUNTAIN
VALUATION SPECIALISTS**

Industrial Strength ...



Steven M. Hager
Director



Richard S. Hubina
Director



Mitchell H. Zatz
Associate Director



Jeremy J. Kroner
Broker



Kirk Vanino
Broker

**For leasing, sales, valuation
and asset management,
call ...**



**CUSHMAN &
WAKEFIELD®**

Global Real Estate Solutions SM

1670 Broadway, Suite 3400
Denver, Colorado 80202

303.813.6400

Fax - 303.813.6499
www.cushwake.com